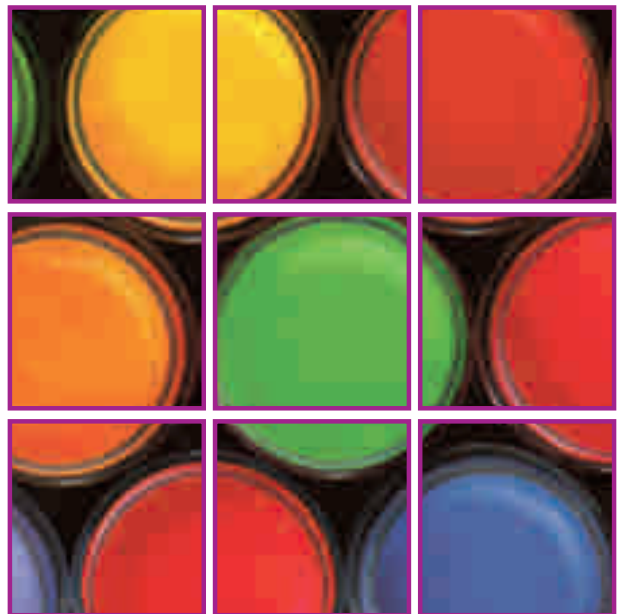


Painting

GOOD INDUSTRY PRACTICES



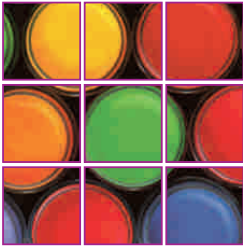
Copyright © 2004 Building and Construction Authority, Singapore. All rights reserved. This document or any part thereof may not be reproduced for any reason whatsoever in any form or means whatsoever and howsoever without the prior written consent and approval of the Building and Construction Authority.

Whilst every effort has been made to ensure the accuracy of the information contained in this publication, the Building and Construction Authority, its employees or agents shall not be responsible for any mistake or inaccuracy that may be contained herein and all such liability and responsibility are expressly disclaimed by these said parties.

The publication includes advertisements of suppliers who have, in one way or another, contributed in the development of this publication. The Building and Construction Authority does not endorse the products included in the advertisements. It is the responsibility of the users to select appropriate products and ensure the selected products meet their specific requirements.

ISBN: 981-05-1531-6





Foreword

The Building and Construction Authority (BCA) has been promoting the use of Construction Quality Assessment System or CONQUAS 21 as the de facto national yardstick for measuring the workmanship quality of building projects. To meet the rising expectation of the homeowners, the Quality Mark (QM) Scheme was launched in July 2002 to promote a higher consistency in workmanship standards for residential developments.

This “Good Industry Practices – Painting” is part of the CONQUAS 21 Enhancement Series on Good Industry Practices. The purpose of the guide is to share with the industry the good painting practices adopted by practitioners and to raise awareness of the different paint systems, the selection criteria and application processes. It provides simple and practical suggestions on how good quality painting can be achieved on site. Common defects associated with paints, their causes and preventive measures are also highlighted in this guide.

In this second edition, the guide has been revised to include more good practices, photographs and graphical presentations for easier reference and better illustration.

It should, however, be pointed out that this guide is not meant to dictate how painting work must be carried out. It only serves to illustrate some of the good practices that designers and applicators have adopted in selecting and applying paints. We gratefully acknowledge the contributions of these practitioners and trust that the industry will find this publication useful in its pursuit of quality excellence.

Lam Siew Wah
Deputy Chief Executive Officer
Industry Development
Building and Construction Authority

